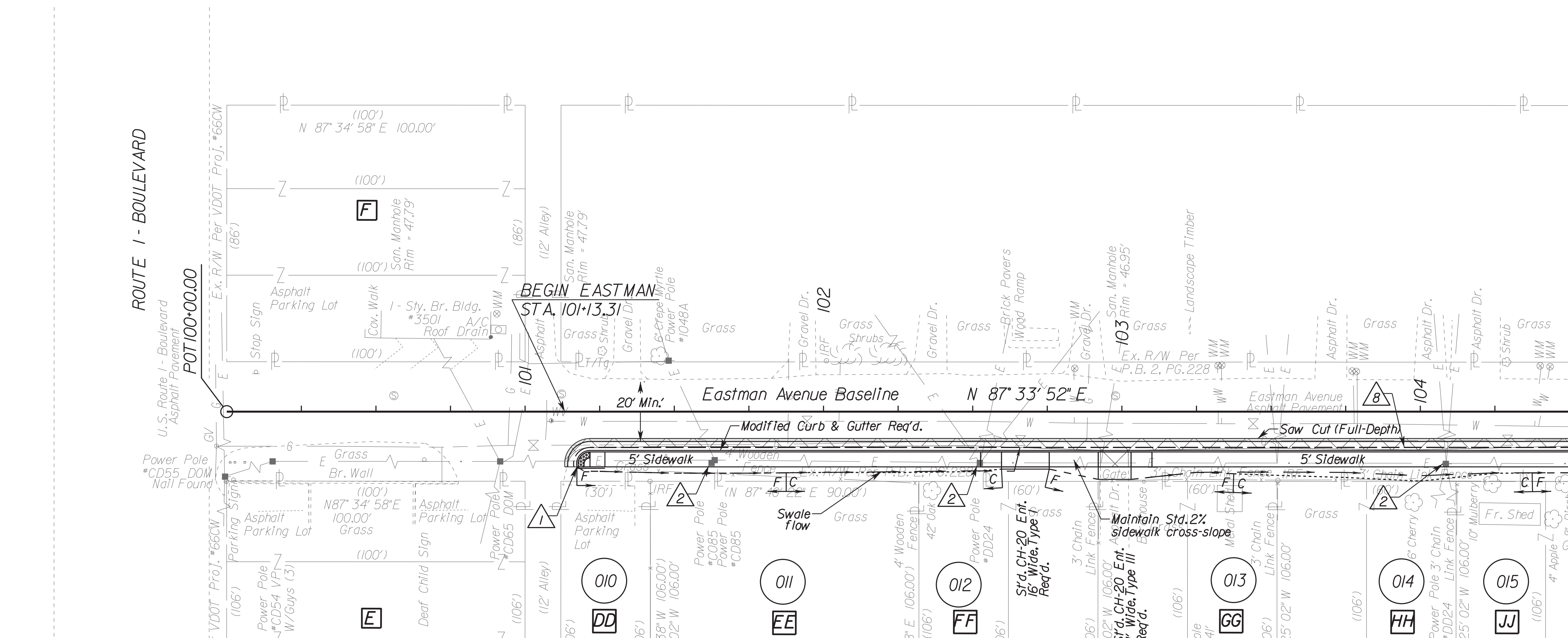


FOR INFORMATIONAL PURPOSES ONLY  
(1:20 SCALE PLANS)



ROUTE 1 - BOULEVARD

MATCH LINE STATION 104+50 SEE SHEET 10(2)

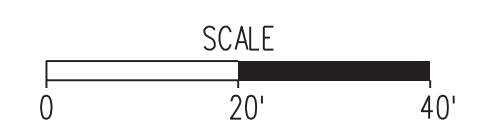
MATCH LINE SEE SHEET 10(3)

LEGEND

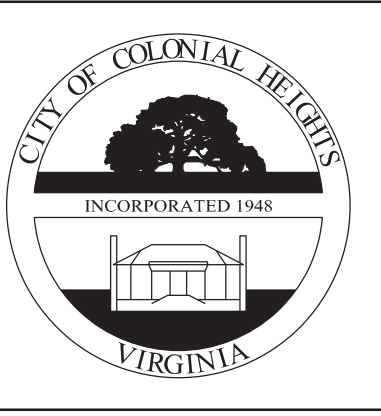
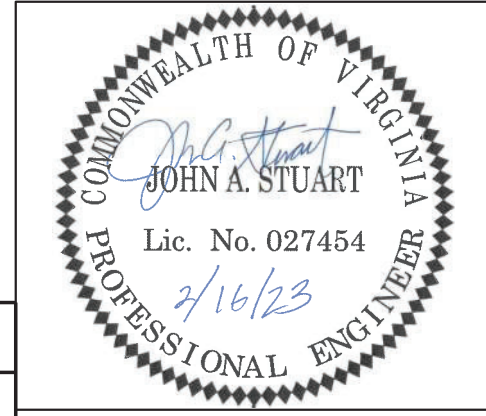
- 1 VDOT S'd. CG-12 Req'd. (Type B)
- 2 Relocate Power Pole
- 3 Relocate Fire Hydrant
- 4 Remove Tree
- 5 Remove and Replace Mailboxes
- 6 Relocate Sewer Cleanout
- 7 VDOT S'd. S-2 Req'd.
- 8 VDOT S'd. UD-4 Req'd.
- 9 Replace with VDOT S'd. RH-1
- 10 VDOT S'd. CG-12 Req'd. (Type A)
- W Adjust Water Meter
- Denotes Demolition of Pavement/Entrance
- Denotes New Pavement
- Denotes Saw Cut
- C Denotes Construction Limits In Cuts
- F Denotes Construction Limits In Fills

CONSTRUCTION NOTE:  
1. See cross-sections for swale grading.

NOTE:  
\* The existing storm sewer pipes are shown based on record drawings provided by the City of Colonial Heights. Contractor to confirm storm pipe invert elevations prior to construction.



REFERENCES	
Curb Ramp Constr. Detail	2C
Entrance Profiles	9(1) - (2)



CITY OF COLONIAL HEIGHTS  
DEPARTMENT OF PUBLIC WORKS  
ENGINEERING DIVISION

NORTH ELEMENTARY  
SIDEWALKS - PHASE II  
EASTMAN PLAN STA 100+00 - 104+50

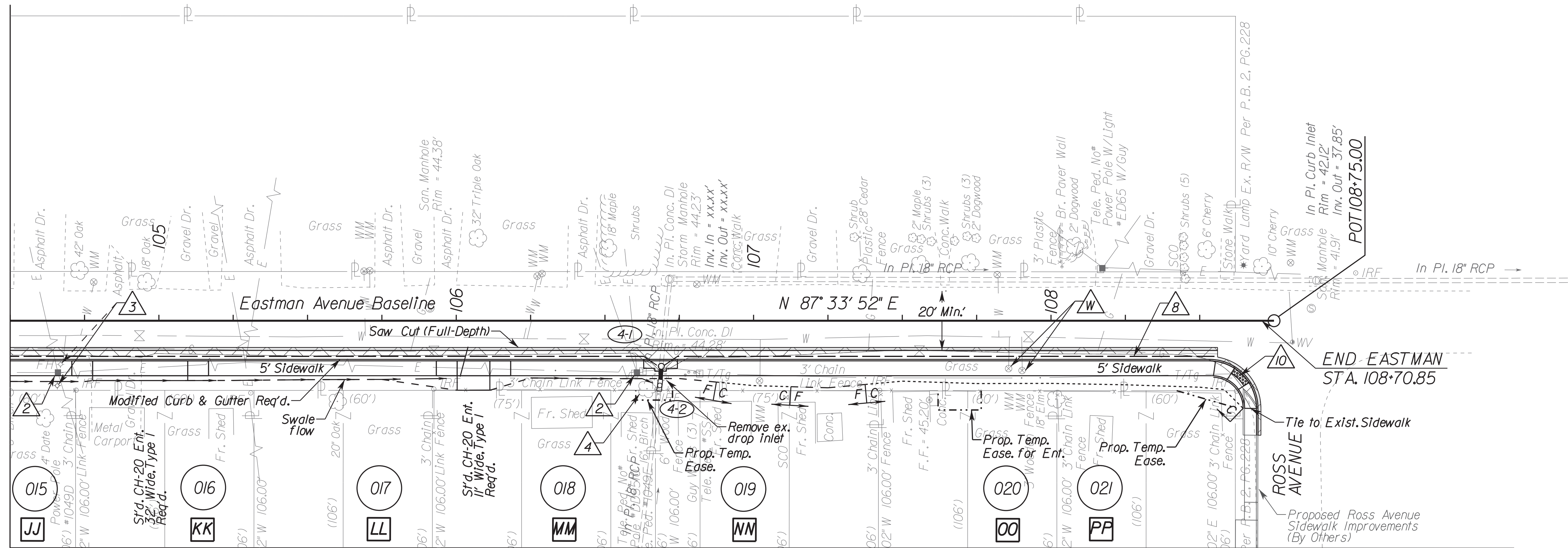
Clark Nexsen Richmond, Virginia ROADWAY/HYDRAULIC ENGINEER	CLARK NEXSEN	CITY PROJECT MANAGER	DRAWN BY	SHEET NO. 10(1)
		T. FLIPPEN	BK	
DATE	12/21/22	DESIGNED BY	BK	
		APPROVED BY	JAS	

2/17/2023 I:\Projects\2500761\100-North\_Elementary\_SRT\S\CAD\06\16\SSheets\10(1)1.dgn



FOR INFORMATIONAL PURPOSES ONLY  
(1:20 SCALE PLANS)

MATCH LINE STATION 104+50 SEE SHEET 10(1)



MATCH LINE SEE SHEET 10(4)

LEGEND

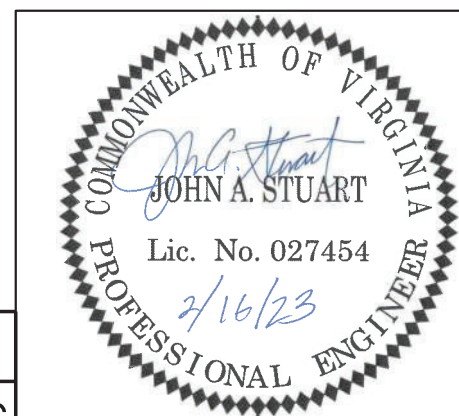
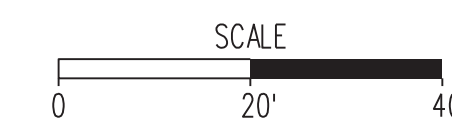
- |   |                                 |       |   |
|---|---------------------------------|-------|---|
| 1 | VDOT S'd. CG-12 Req'd. (Type B) | 9     | Replace with VDOT S'd. RI-1             |
| 2 | Relocate Power Pole             | 10    | VDOT S'd. CG-12 Req'd. (Type A)         |
| 3 | Relocate Fire Hydrant           | W     | Adjust Water Meter                      |
| 4 | Remove Tree                     | [X]   | Denotes Demolition of Pavement/Entrance |
| 5 | Remove and Replace Mailboxes    | [ ]   | Denotes New Pavement                    |
| 6 | Relocate Sewer Cleanout         | [ - ] | Denotes Saw Cut                         |
| 7 | VDOT S'd. S-2 Req'd.            | C     | Denotes Construction Limits in Cuts     |
| 8 | VDOT S'd. UD-4 Req'd.           | F     | Denotes Construction Limits in Fills    |

CONSTRUCTION NOTE:

1. See cross-sections for swale grading.

NOTE:

\* The existing storm sewer pipes are shown based on record drawings provided by the City of Colonial Heights. Contractor to confirm storm pipe invert elevations prior to construction.



CITY OF COLONIAL HEIGHTS  
DEPARTMENT OF PUBLIC WORKS  
ENGINEERING DIVISION

NORTH ELEMENTARY  
SIDEWALKS - PHASE II  
EASTMAN PLAN STA 104+50 - 108+62

REFERENCES	
Curb Ramp Constr. Detail	2C
Entrance Profiles	9(1) - (2)

Clark Nexsen  
Richmond, Virginia  
ROADWAY/HYDRAULIC ENGINEER

CLARK NEXSEN

CITY PROJECT MANAGER  
T. FLIPPEN  
DATE 12/21/22

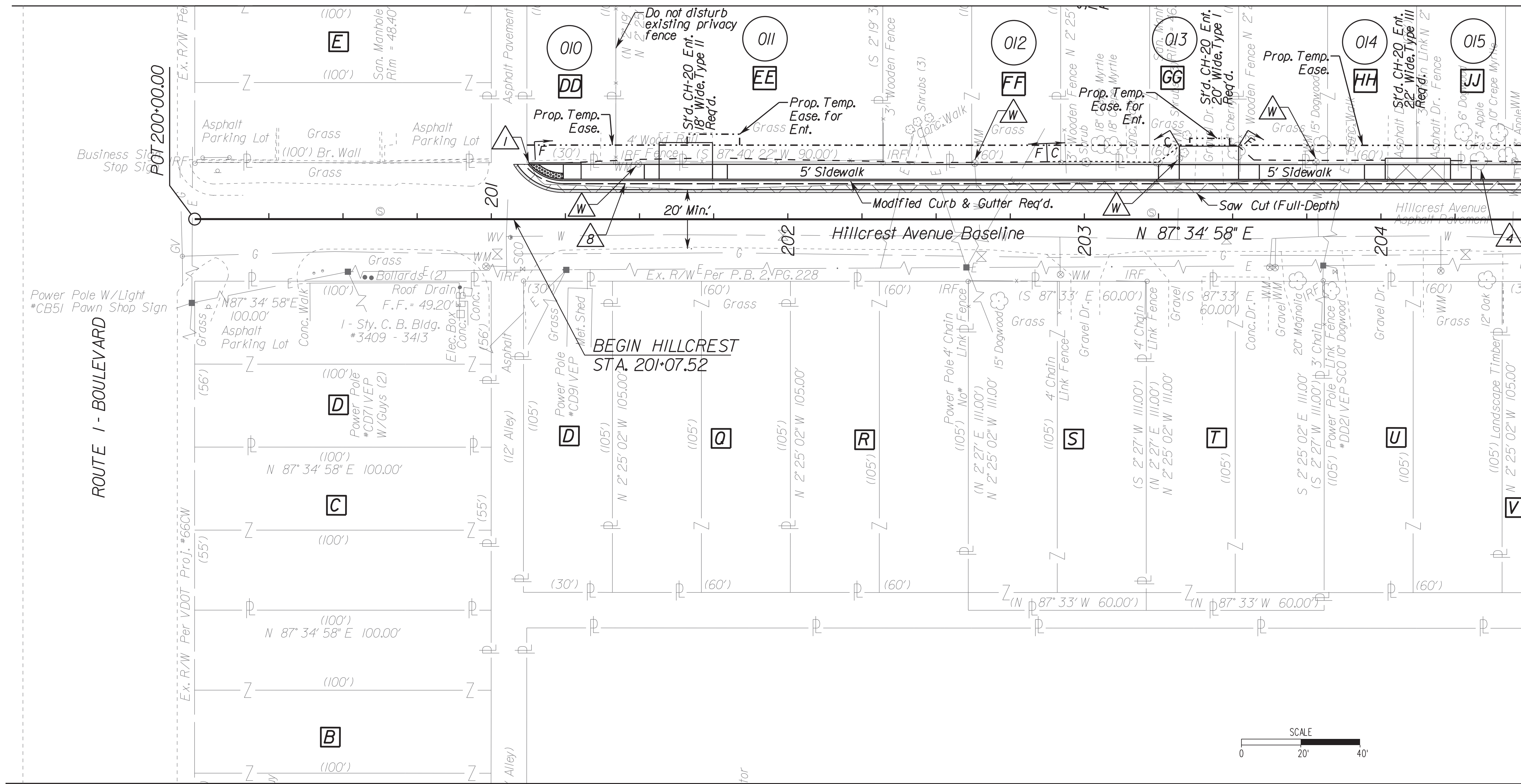
DRAWN BY BK  
DESIGNED BY BK  
APPROVED BY JAS

SHEET NO. 10(2)



FOR INFORMATIONAL PURPOSES ONLY  
(1:20 SCALE PLANS)

MATCH LINE SEE SHEET 10(1)



MATCH LINE STATION 204+50 SEE SHEET 10(4)

MATCH LINE SEE SHEET 10(5)

LEGEND

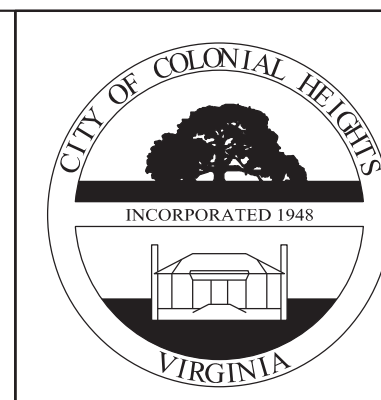
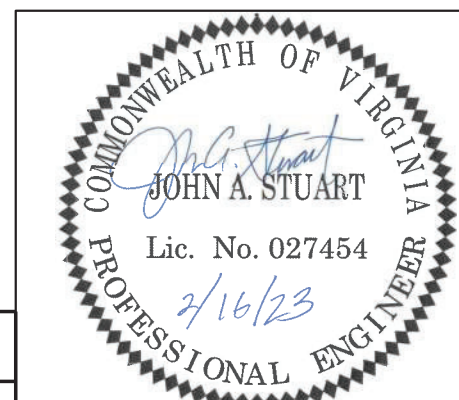
- |   |                                  |     |   |
|---|----------------------------------|-----|---|
| 1 | VDOT St'd. CG-12 Req'd. (Type B) | 9   | Replace with VDOT St'd. RH-1            |
| 2 | Relocate Power Pole              | 10  | VDOT St'd. CG-12 Req'd. (Type A)        |
| 3 | Relocate Fire Hydrant            | W   | Adjust Water Meter                      |
| 4 | Remove Tree                      | [X] | Denotes Demolition of Pavement/Entrance |
| 5 | Remove and Replace Mailboxes     | [ ] | Denotes New Pavement                    |
| 6 | Relocate Sewer Cleanout          | —   | Denotes Saw Cut                         |
| 7 | VDOT St'd. S-2 Req'd.            | C   | Denotes Construction Limits In Cuts     |
| 8 | VDOT St'd. UD-4 Req'd.           | F   | Denotes Construction Limits In Fills    |

CONSTRUCTION NOTE:  
1. See cross-sections for swale grading.

NOTE:  
\* The existing storm sewer pipes are shown based on record drawings provided by the City of Colonial Heights. Contractor to confirm storm pipe invert elevations prior to construction.

REFERENCES

- Curb Ramp Constr. Detail 2C
- Entrance Profiles 9(1) - (2)



CITY OF COLONIAL HEIGHTS  
DEPARTMENT OF PUBLIC WORKS  
ENGINEERING DIVISION

NORTH ELEMENTARY  
SIDEWALKS - PHASE II  
HILLCREST PLAN STA 200+00 - 204+50

Clark Nexsen  
Richmond, Virginia  
ROADWAY/HYDRAULIC ENGINEER

CLARK NEXSEN

CITY PROJECT MANAGER

T. FLIPPEN

DATE 12/21/22

DRAWN BY

BK

DESIGNED BY

BK

APPROVED BY

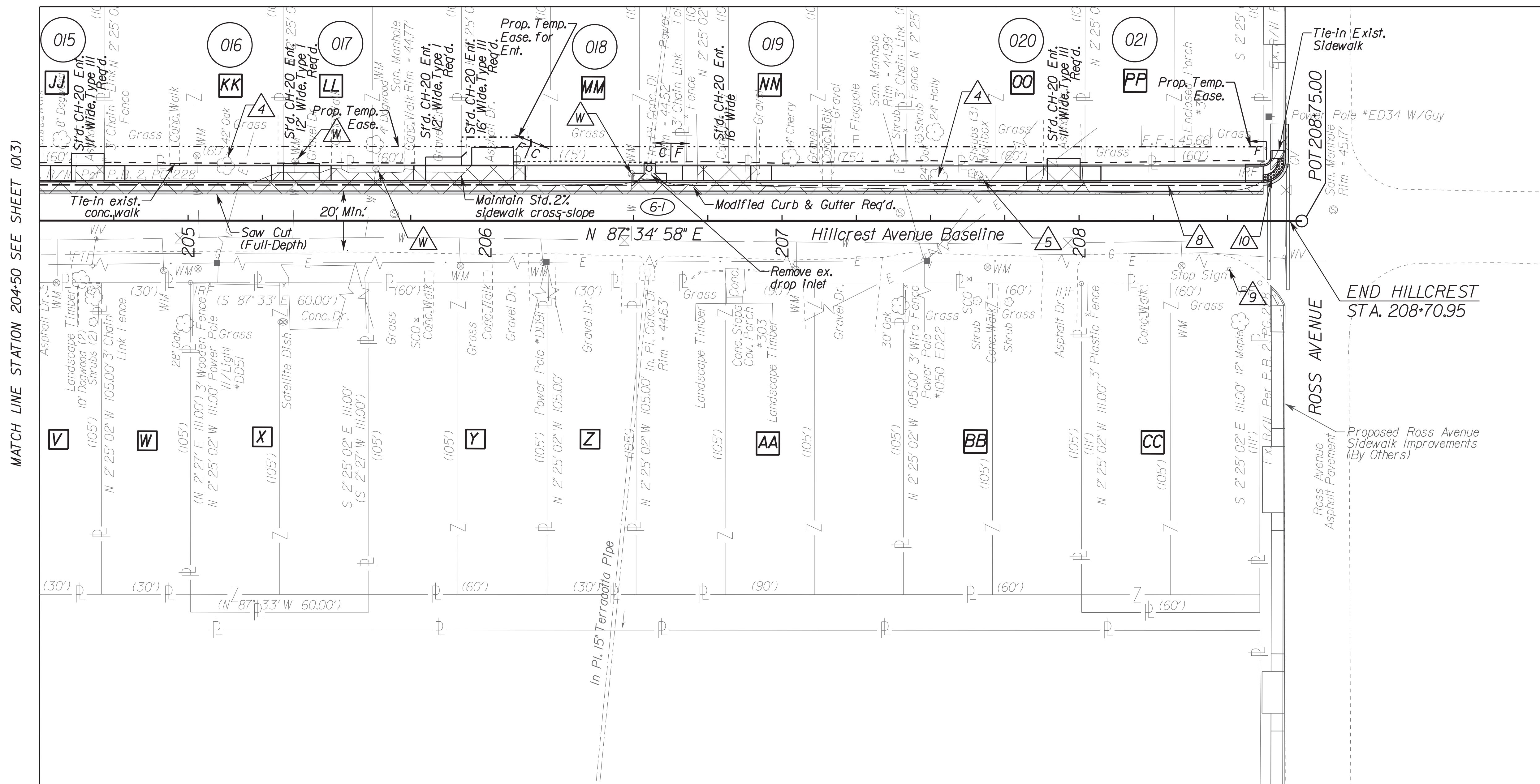
JAS

SHEET NO. 10(3)



FOR INFORMATIONAL PURPOSES ONLY  
(1:20 SCALE PLANS)

MATCH LINE SEE SHEET 10(2)



MATCH LINE STATION 204+50 SEE SHEET 10(3)

MATCH LINE SEE SHEET 10(6)

**LEGEND**

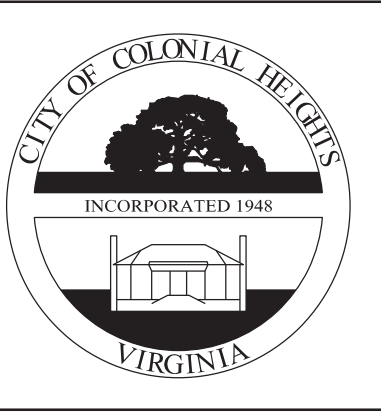
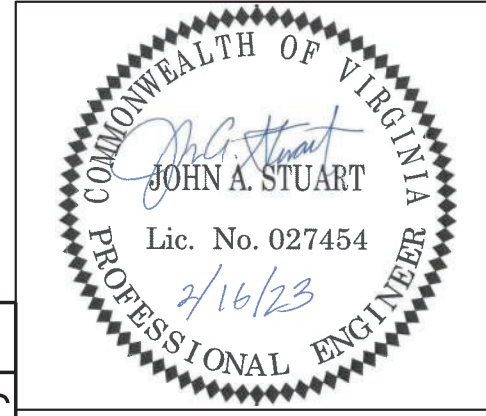
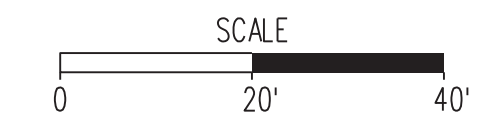
- |   |                                  |                 |   |
|---|----------------------------------|-----------------|---|
| 1 | VDOT St'd. CG-12 Req'd. (Type B) | 9               | Replace with VDOT St'd. RI-1            |
| 2 | Relocate Power Pole              | 10              | VDOT St'd. CG-12 Req'd. (Type A)        |
| 3 | Relocate Fire Hydrant            | W               | Adjust Water Meter                      |
| 4 | Remove Tree                      | [Hatched Box]   | Denotes Demolition of Pavement/Entrance |
| 5 | Remove and Replace Mailboxes     | [Solid Box]     | Denotes New Pavement                    |
| 6 | Relocate Sewer Cleanout          | [Dashed Line]   | Denotes Saw Cut                         |
| 7 | VDOT St'd. S-2 Req'd.            | [Dotted Line]   | Denotes Construction Limits In Cuts     |
| 8 | VDOT St'd. UD-4 Req'd.           | [Dash-dot Line] | Denotes Construction Limits In Fills    |

**CONSTRUCTION NOTE:**

1. See cross-sections for swale grading.

**NOTE:**

\* The existing storm sewer pipes are shown based on record drawings provided by the City of Colonial Heights. Contractor to confirm storm pipe invert elevations prior to construction.



CITY OF COLONIAL HEIGHTS  
DEPARTMENT OF PUBLIC WORKS  
ENGINEERING DIVISION  
  
NORTH ELEMENTARY  
SIDEWALKS - PHASE II  
HILLCREST PLAN STA 204+50 - 208+62

REFERENCES	
Curb Ramp Constr. Detail	2C
Entrance Profiles	9(1) - (2)

Clark Nexsen  
Richmond, Virginia  
ROADWAY/HYDRAULIC ENGINEER

**CLARK NEXSEN**

CITY PROJECT MANAGER	DRAWN BY	BK
T. FLIPPEN	DESIGNED BY	BK
DATE 12/21/22	APPROVED BY	JAS

SHEET NO. 10(4)

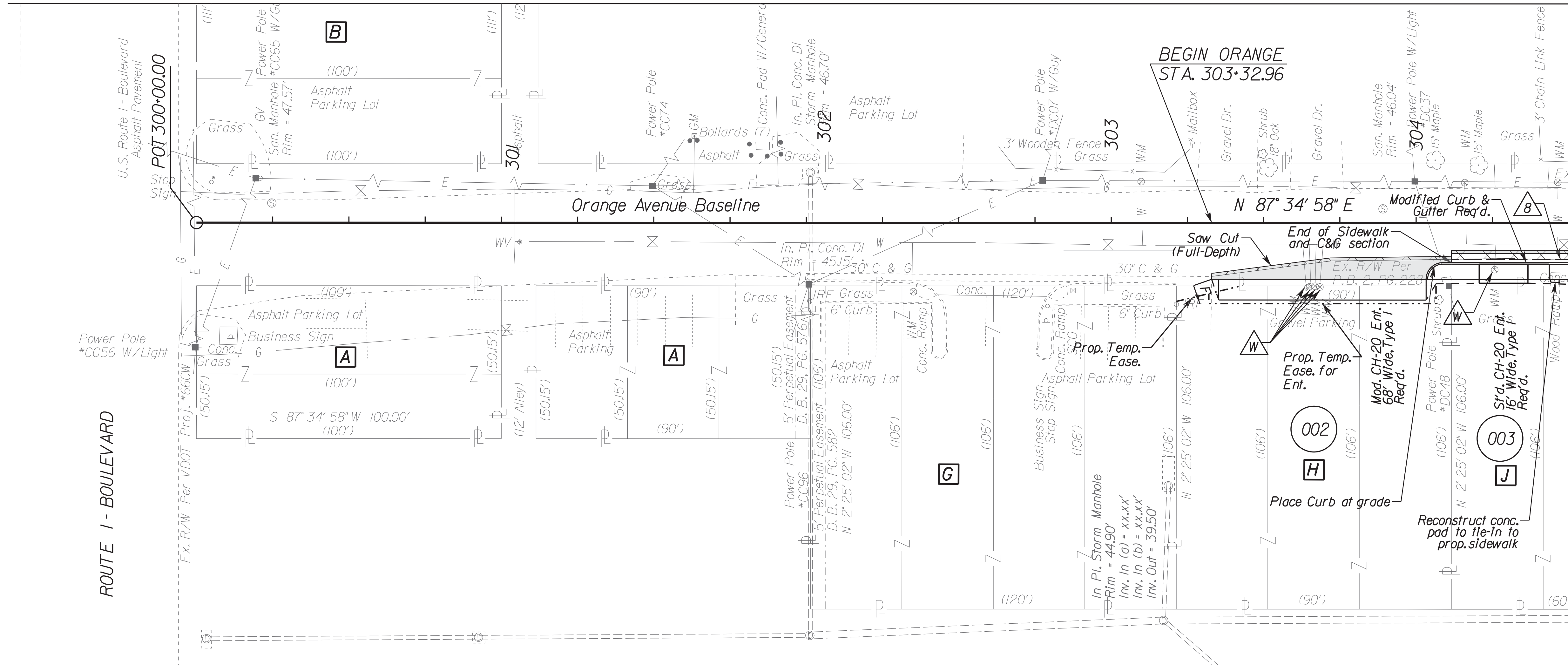
2/1/2023 I:\Projects\2500761\10-North\_Elementary\_SRT\S\CAD\06\10\Sheets\0610(4).dgn



FOR INFORMATIONAL PURPOSES ONLY  
(1:20 SCALE PLANS)



MATCH LINE SEE SHEET 10(3)



MATCH LINE STATION 304+50 SEE SHEET 10(6)

LEGEND

- △ VDOT S'd. CG-12 Req'd. (Type B)
- △ Relocate Power Pole
- △ Relocate Fire Hydrant
- △ Remove Tree
- △ Remove and Replace Mailboxes
- △ Relocate Sewer Cleanout
- △ VDOT S'd. S-2 Req'd.
- △ VDOT S'd. UD-4 Req'd.
- △ Replace with VDOT S'd. RI-1
- △ VDOT S'd. CG-12 Req'd. (Type A)
- △ Adjust Water Meter
- ▢ Denotes Demolition of Pavement/Entrance
- ▢ Denotes New Pavement
- Denotes Saw Cut
- Denotes Construction Limits In Cuts
- Denotes Construction Limits In Fills

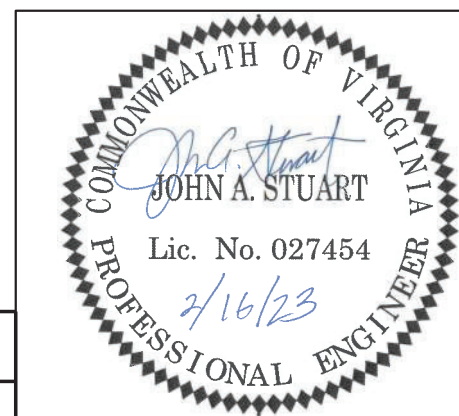
CONSTRUCTION NOTE:  
1. See cross-sections for swale grading.

NOTE:  
\* The existing storm sewer pipes are shown based on record drawings provided by the City of Colonial Heights. Contractor to confirm storm pipe invert elevations prior to construction.



REFERENCES

Entrance Profiles 9(1) - (2)



CITY OF COLONIAL HEIGHTS  
DEPARTMENT OF PUBLIC WORKS  
ENGINEERING DIVISION

NORTH ELEMENTARY  
SIDEWALKS - PHASE II  
ORANGE PLAN STA 300+00 - 304+50

Clark Nexsen  
Richmond, Virginia  
ROADWAY/HYDRAULIC ENGINEER

CLARK NEXSEN

CITY PROJECT MANAGER  
T. FLIPPEN  
DATE 12/21/22

DRAWN BY BK  
DESIGNED BY BK  
APPROVED BY JAS

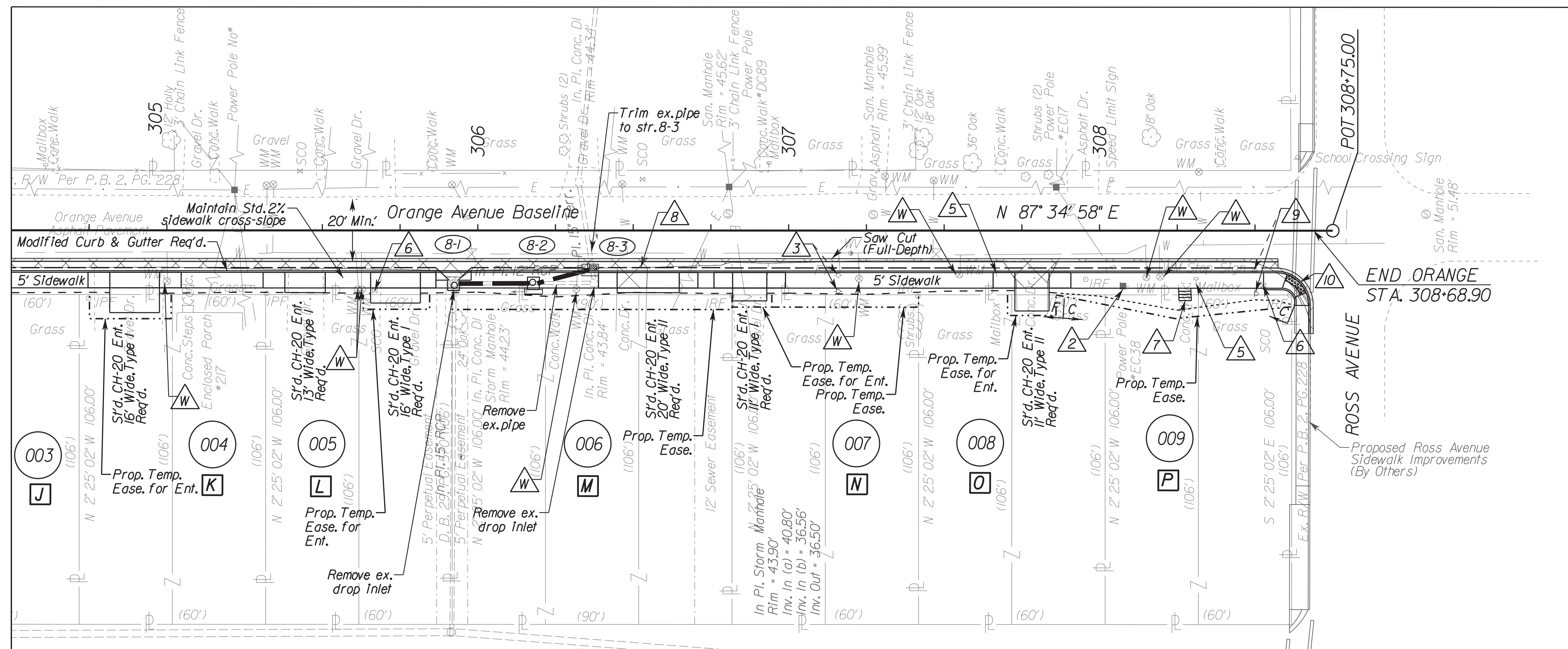
SHEET NO. 10(5)



FOR INFORMATIONAL PURPOSES ONLY  
(1:20 SCALE PLANS)

MATCH LINE SEE SHEET 10(4)

MATCH LINE STATION 304+50 SEE SHEET 10(5)



**LEGEND**

- 1 VDOT S'd. CG-12 Req'd. (Type B)
- 2 Relocate Power Pole
- 3 Relocate Fire Hydrant
- 4 Remove Tree
- 5 Remove and Replace Mailboxes
- 6 Relocate Sewer Cleanout
- 7 VDOT S'd. S-2 Req'd.
- 8 VDOT S'd. UD-4 Req'd.
- 9 Replace with VDOT S'd. RI-1
- 10 VDOT S'd. CG-12 Req'd. (Type A)
- W Adjust Water Meter
- Denotes Demolition of Pavement/Entrance
- Denotes New Pavement
- Denotes Saw Cut
- C Denotes Construction Limits In Cuts
- F Denotes Construction Limits In Fills

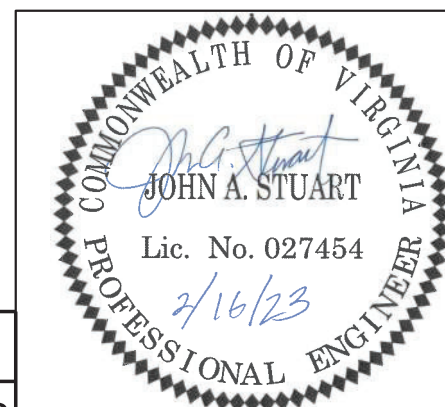
**CONSTRUCTION NOTE:**  
1. See cross-sections for swale grading.

**NOTE:**  
\* The existing storm sewer pipes are shown based on record drawings provided by the City of Colonial Heights. Contractor to confirm storm pipe invert elevations prior to construction.



**REFERENCES**

Curb Ramp Constr. Detail	2C
Entrance Profiles	9(1) - (2)
Construction Detail	2B



CITY OF COLONIAL HEIGHTS  
DEPARTMENT OF PUBLIC WORKS  
ENGINEERING DIVISION

NORTH ELEMENTARY  
SIDEWALKS - PHASE II  
ORANGE PLAN STA 304+50 - 308+62

Clark Nexsen  
Richmond, Virginia  
ROADWAY/HYDRAULIC ENGINEER

CLARK NEXSEN

CITY PROJECT MANAGER

T. FLIPPEN

DATE 12/21/22

DRAWN BY

BK

DESIGNED BY

BK

APPROVED BY

JAS

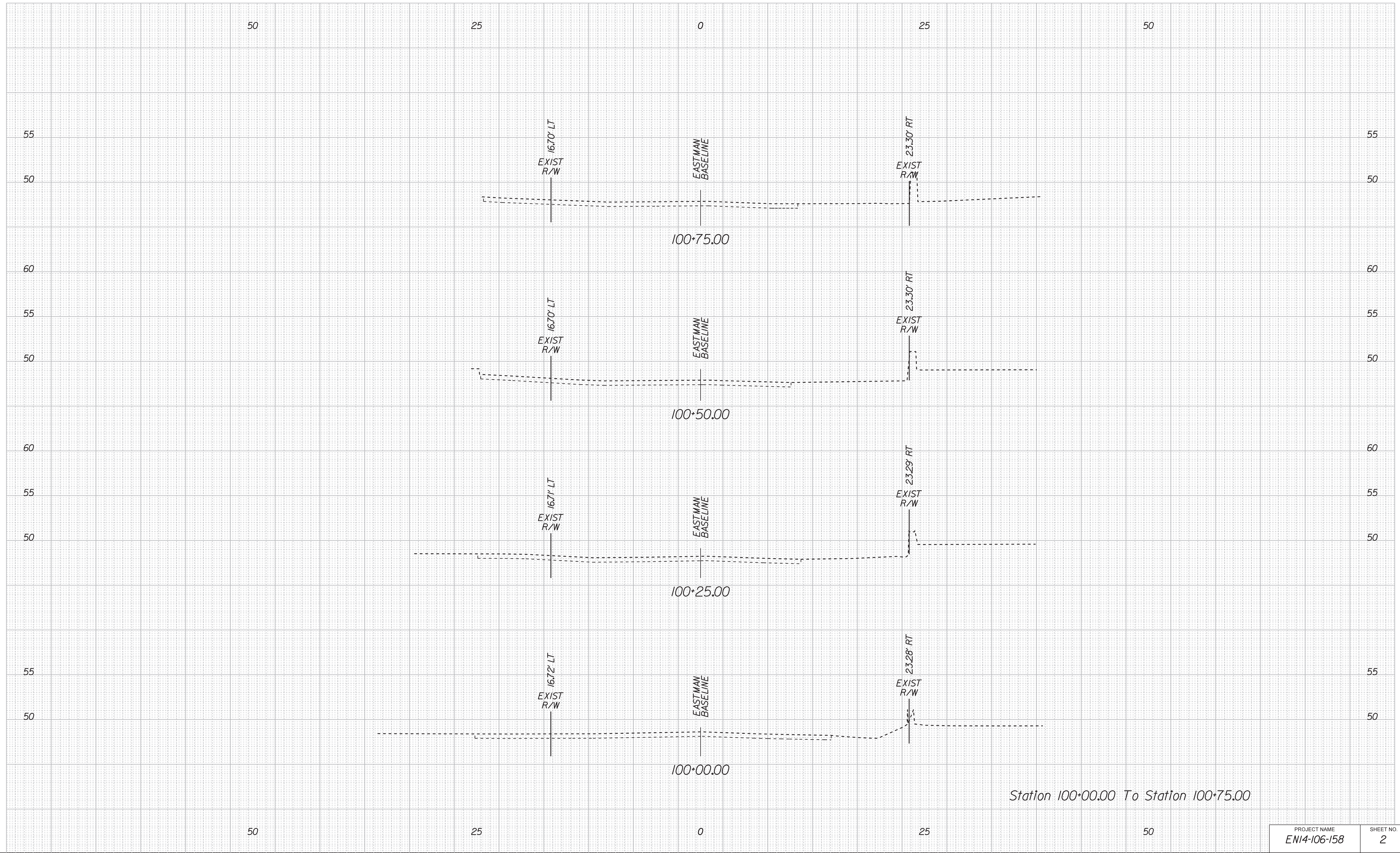
SHEET NO. 10(6)





CROSS SECTIONS  
SCALE 1 IN. = 5 FT

EASTMAN AVENUE



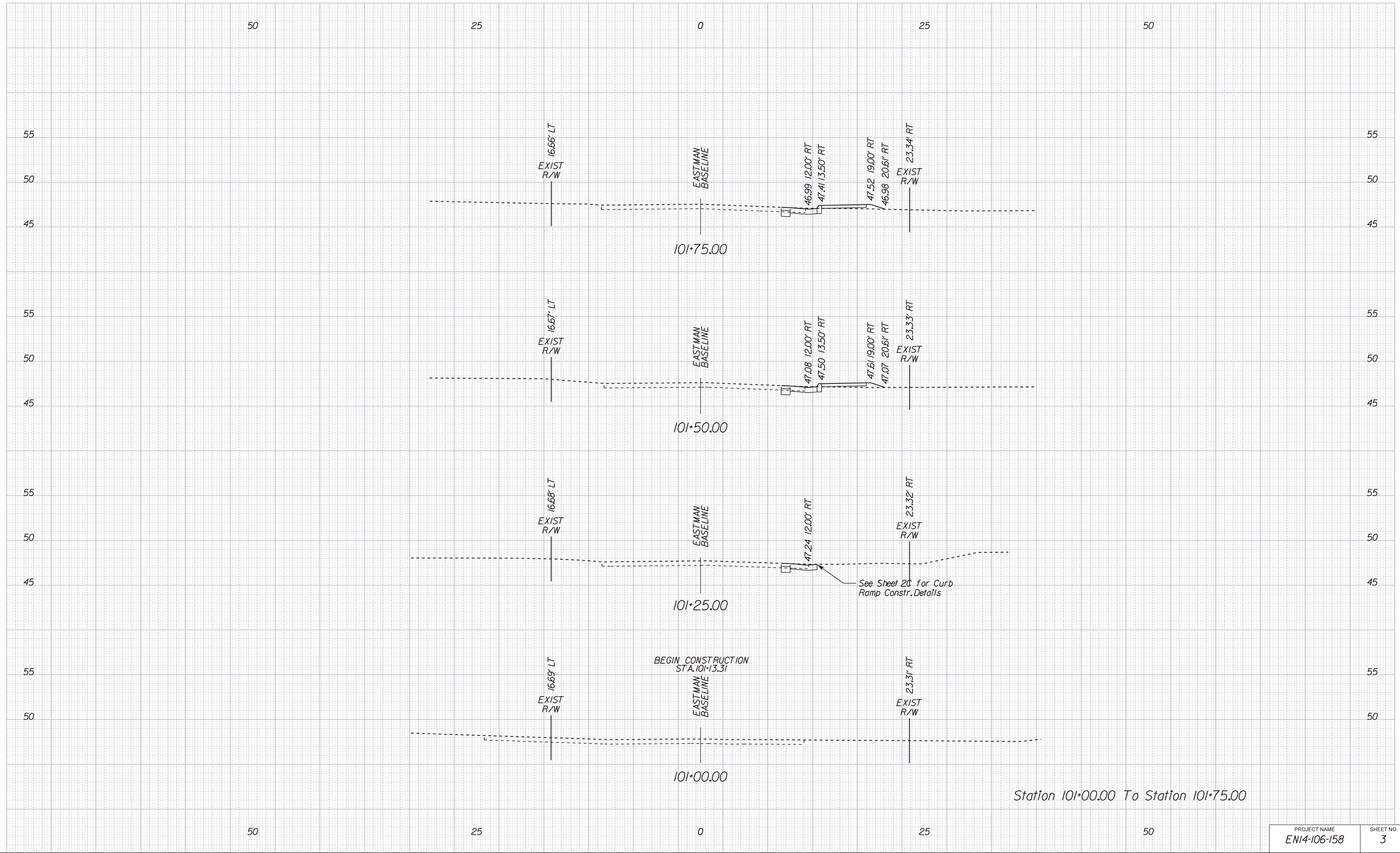
Station 100+00.00 To Station 100+75.00

2/23/2023  
I:\Projects\2500761\100-North\_Elementary\_SRT\CAD\06/16/25\Sheets\060618\_x.rdp



CROSS SECTIONS  
SCALE 1 IN. = 5 FT

EASTMAN AVENUE

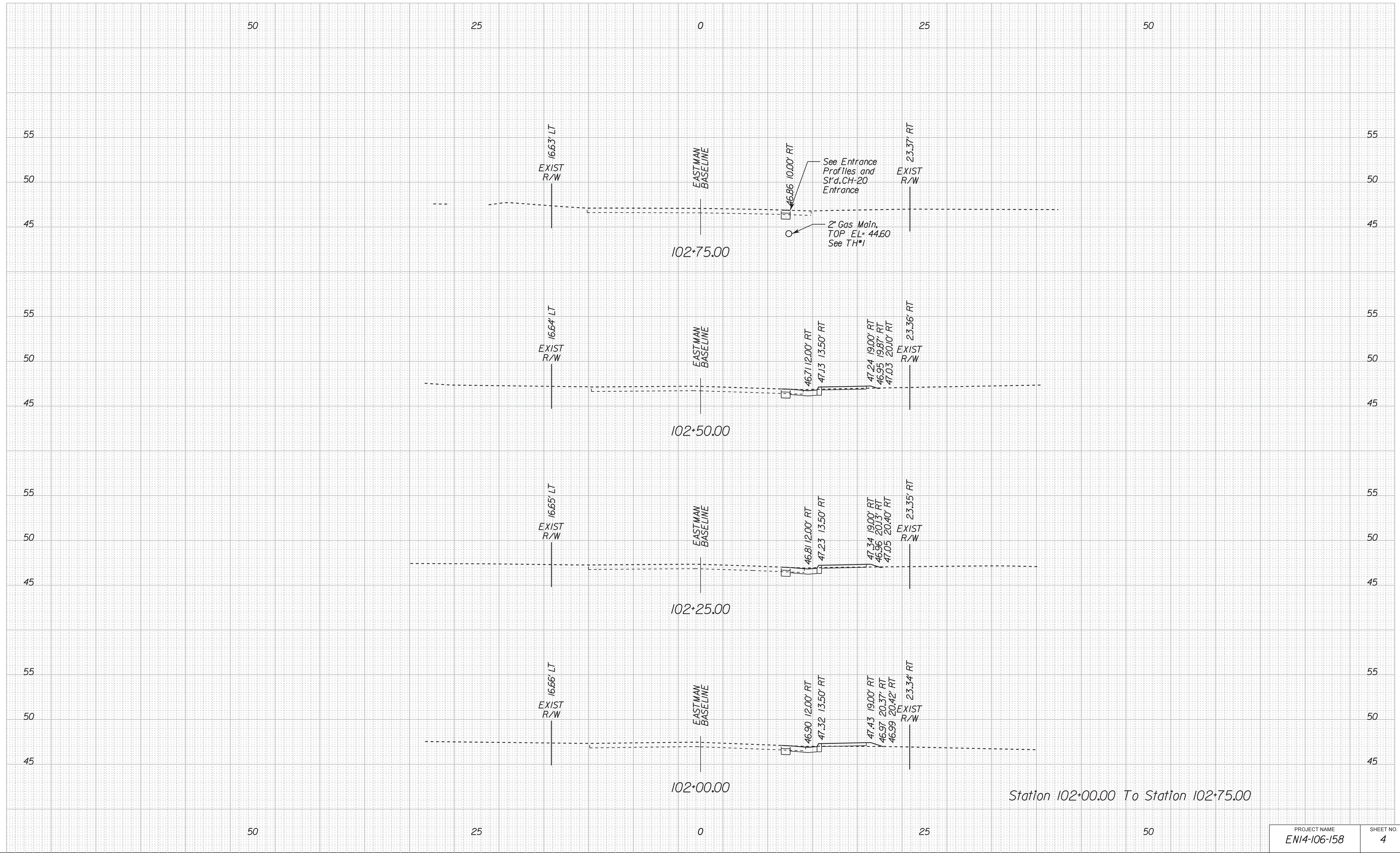


2/13/2023  
I:\Projects\1500761\100-North\_Elementary\_SRT\CAD\06/16/25/Sheets\060818\_x.rdp



CROSS SECTIONS  
SCALE 1 IN. = 5 FT

EASTMAN AVENUE



Station 102+00.00 To Station 102+75.00

2/13/2023  
I:\Projects\1500761\100-North\_Elementary\_SRT\SCAD\06\06\Sheets\060818\_x.rdp